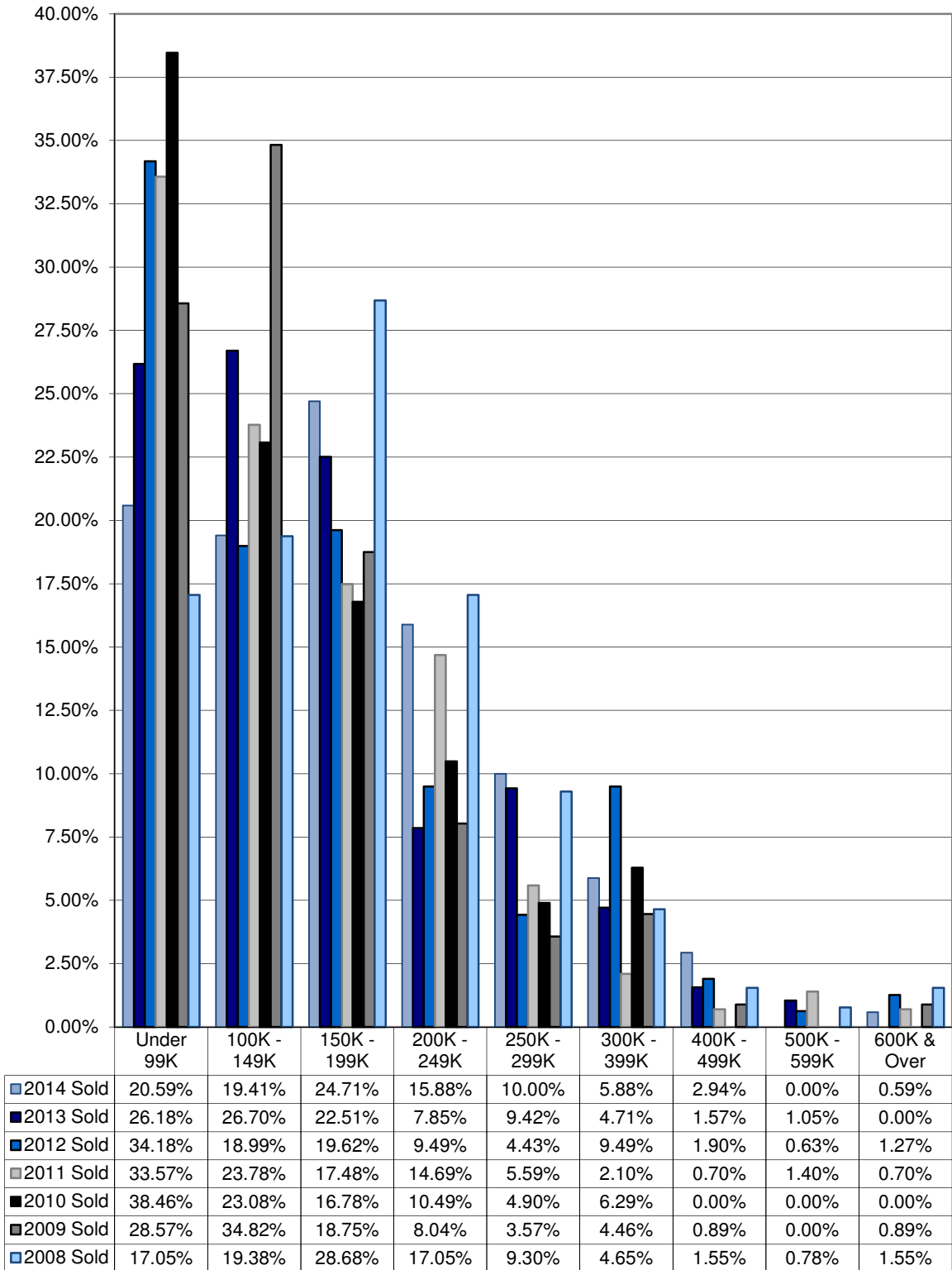


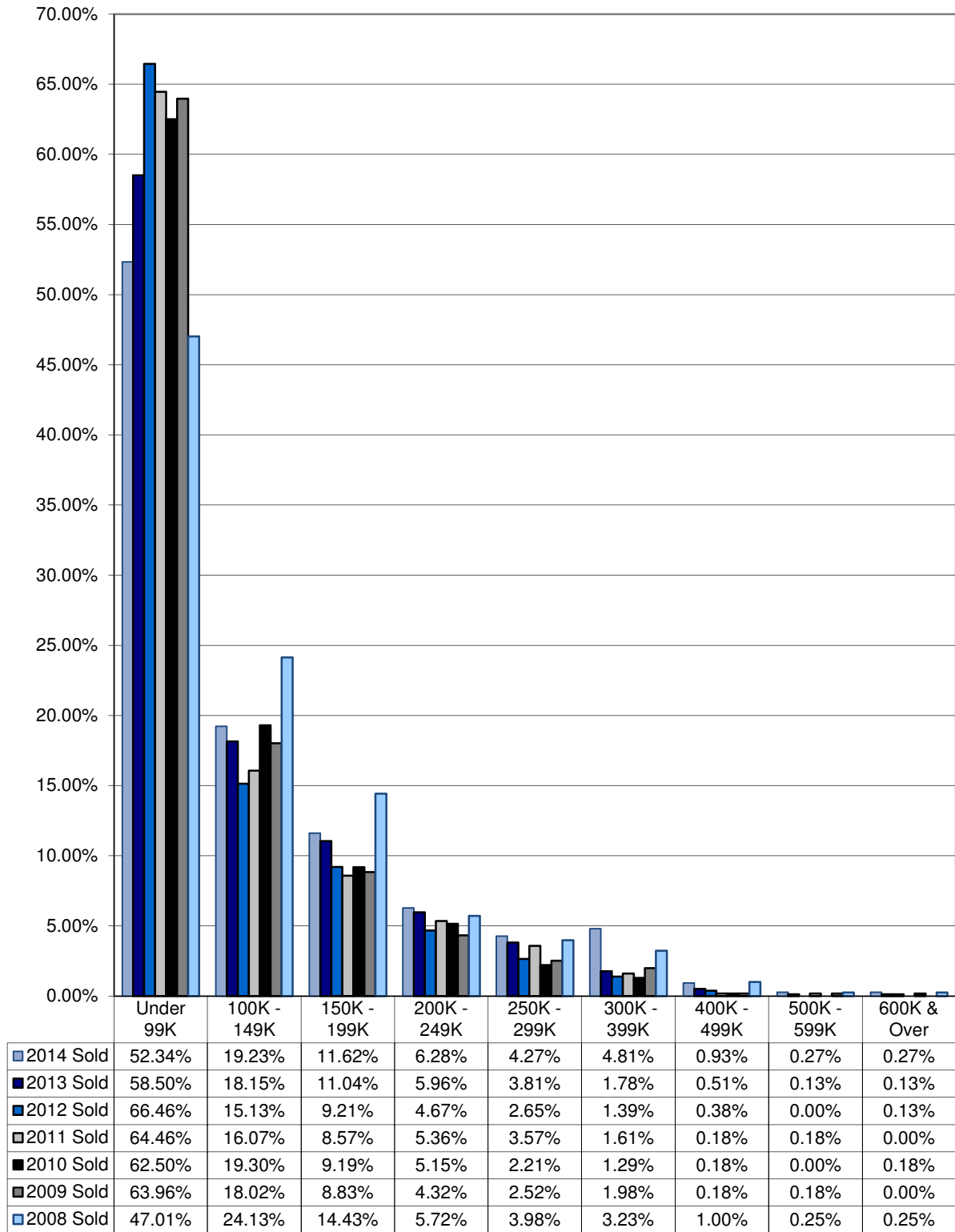


Livingston County



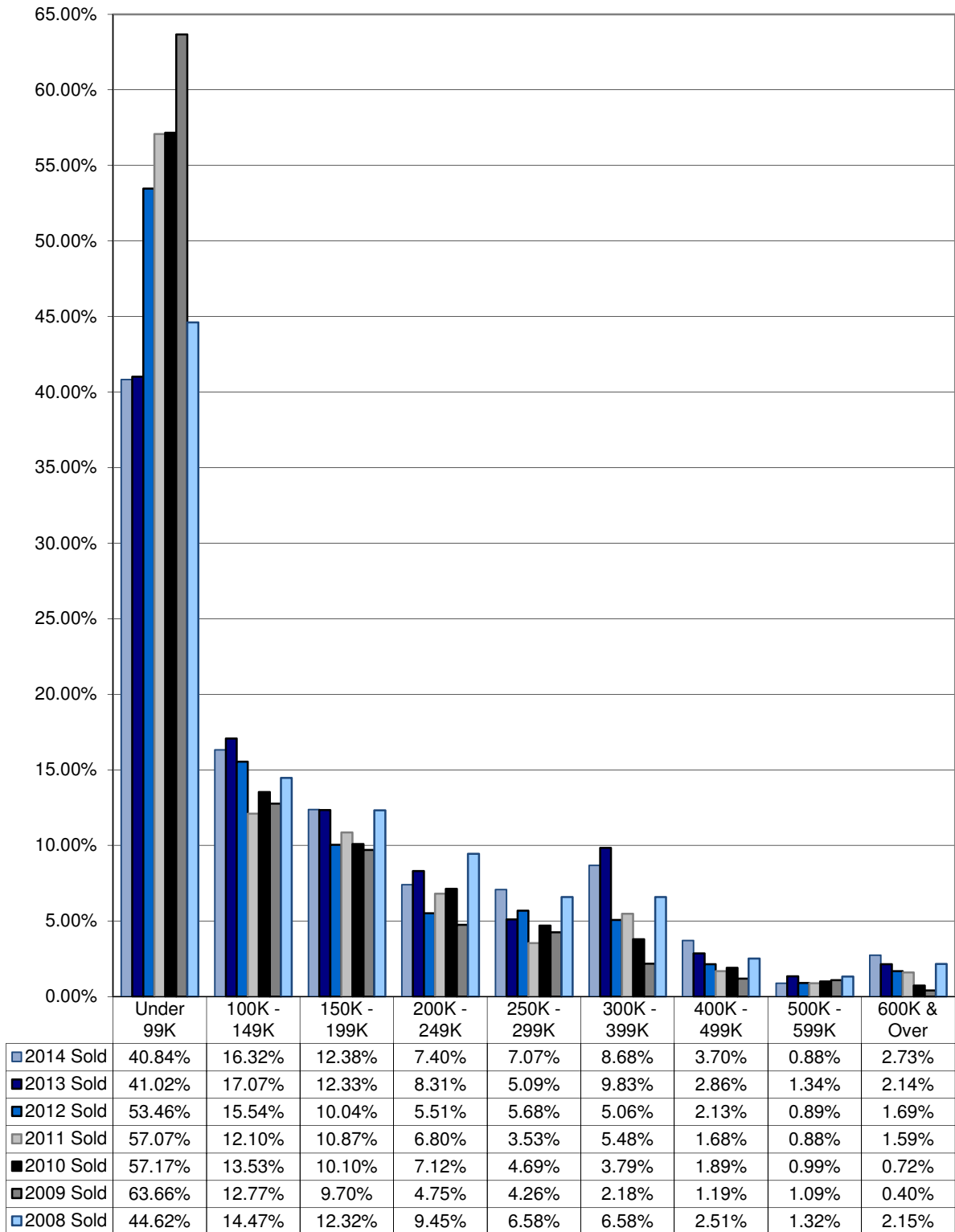


Macomb County



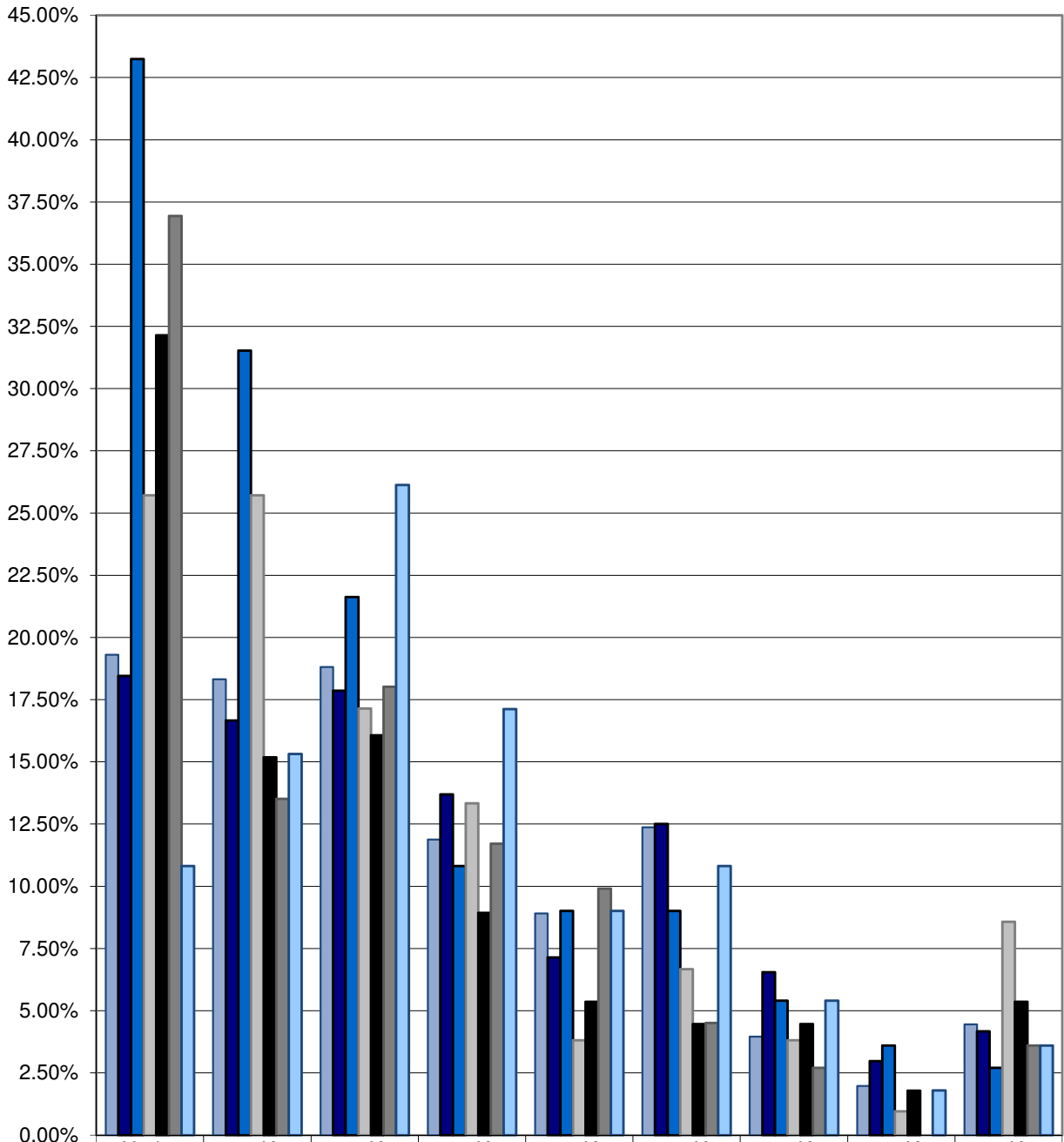


Oakland County





Washtenaw County



	Under 99K	100K - 149K	150K - 199K	200K - 249K	250K - 299K	300K - 399K	400K - 499K	500K - 599K	600K & Over
2014 Sold	19.31%	18.32%	18.81%	11.88%	8.91%	12.38%	3.96%	1.98%	4.46%
2013 Sold	18.45%	16.67%	17.86%	13.69%	7.14%	12.50%	6.55%	2.98%	4.17%
2012 Sold	43.24%	31.53%	21.62%	10.81%	9.01%	9.01%	5.41%	3.60%	2.70%
2011 Sold	25.71%	25.71%	17.14%	13.33%	3.81%	6.67%	3.81%	0.95%	8.57%
2010 Sold	32.14%	15.18%	16.07%	8.93%	5.36%	4.46%	4.46%	1.79%	5.36%
2009 Sold	36.94%	13.51%	18.02%	11.71%	9.91%	4.50%	2.70%	0.00%	3.60%
2008 Sold	10.81%	15.32%	26.13%	17.12%	9.01%	10.81%	5.41%	1.80%	3.60%



Wayne County Excluding City of Detroit

